

Elegant®

All-Glass Series 2001 Belt Drive System



All Glass, Partial or Full Breakout System For Upscale Entrance Applications

The all-glass Elegant® system enhances your building's exterior beauty while offering all the advantages of automatic operation and energy efficiency.

Exclusive standard system features:

- Frameless, offset glass design
- Heavy duty operator ensures quiet and smooth operation
- Available with up to 76" of net slide opening width and 153 ¼" full breakout opening width
- Supplied with ½" tempered glass



Specify Horton and demand AAADM certified installation



Custom Options

- Custom unit widths between 7'-0" & 9'-0" (Single Slide)
9'-0" & 14'-0" (Bi-parting)
- Custom bottom rails and jambs
- Tinted gray or bronze glass
- Transom or extra wide sidelite
- Custom anodized or paint finish or stainless steel or brass cladding

Applications

- Hotel/Resorts
- Medical Facilities
- Office Buildings
- Retail

Did You Know?



Horton was the first in the industry to gain nationwide building code acceptance for the automatic sliding door.

Sliding Door Systems



Elegant®

All-Glass Series 2001 Belt Drive System

Door units are typically actuated with header mounted sensor at interior & exterior for detection of traffic in each direction. Door closes after sensors clear and time delay expires. Remote control or security system actuation is available.

Installation and Operation

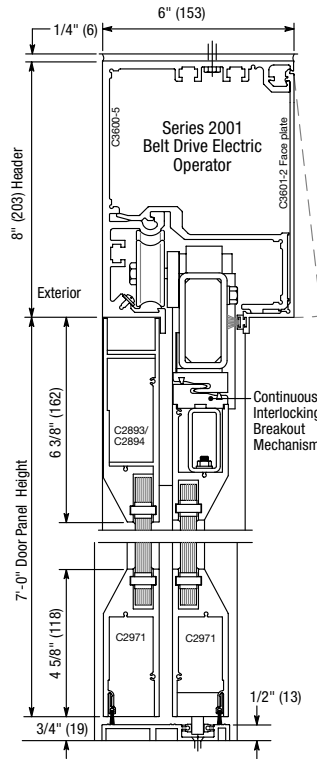
Electrical Requirements:

120, VAC, 50 - 60 Hz,
single phase, 15 amp service.
Current draw - 3.15 amps.

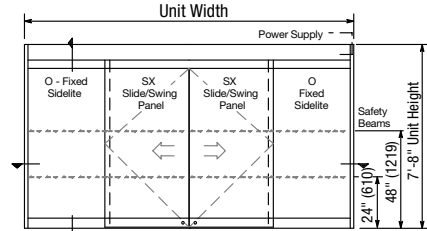


Breakaway Sidelite Panels

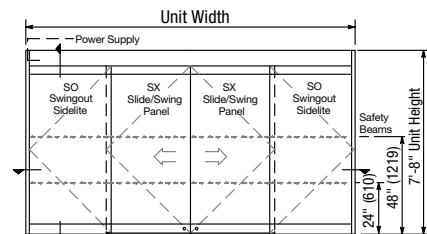
Compliant with NFPA 101 &
ANSI A156.10



Vertical Section
Door shown in open position



Type 110
O-SX-SX-O



Type 310
SO-SX-SX-SO

Selection Guide

Model	Unit Width	Maximum Slide Opening	Breakout Opening	
			Type 110	Type 310
Single Slide	7'-0" (2134)	3'-0" (914)	3'-1 3/4" (959)	6'-3" (1905)
	8'-0" (2438)	3'-6" (1067)	3'-7 3/4" (1111)	7'-3" (2210)
	8'-6" (2591)	3'-9" (1143)	3'-10 3/4" (1187)	7'-9" (2362)
	9'-0" (2743)	4'-0" (1219)	4'-1 3/4" (1264)	8'-3" (2515)
Bi-parting	9'-0" (2743)	3'-6" (1067)	3'-10" (1168)	7'-9 1/2" (2375)
	10'-0" (3048)	4'-0" (1219)	4'-4" (1321)	8'-9 1/2" (2680)
	12'-0" (3658)	5'-0" (1524)	5'-4" (1627)	10'-9 1/2" (3289)
	14'-0" (4267)	6'-0" (1829)	6'-4" (1930)	12'-9 1/4" (3899)

For additional options and drawings visit hortondoors.com



Horton Automatics
World Headquarters
4242 Baldwin Boulevard
Corpus Christi, Texas 78405-3399 USA
Phone: 800-531-3111, 361-888-5591
Fax: 361-888-6510
www.hortondoors.com

Horton Automatics, Ltd.
United Kingdom
Unit A, Hortonwood 31
Telford, Shropshire, England TF1-7YZ
Phone: 01952 670169
Fax: 01952 670181



A Division of
Overhead Door Corporation
A Sanwa Shutter Company